



# Automation Solutions Selection Guide

**Ravison** | **Industrial Controls**  
an **ERIKS** company

# About Rawson/Industrial Controls

## About Rawson/Industrial Controls

Created by joining two industry-leading companies in 2019, Rawson/Industrial Controls offers more than 100 years of combined experience serving customers in the oil and gas, chemical, refining, pharmaceutical, pulp and paper, food and beverage, water and wastewater, and power generation industries. With a team of in-house engineers, along with instrumentation and valve customization services, Rawson/Industrial Controls designs and customizes product solutions to help customers solve complex problems. The company currently has partnerships in 31 states across the Gulf Coast, Mid-Atlantic, Midwest, Northeast, Southeast, and Southwest regions of the U.S.

## Markets Served



MACHINE/EQUIPMENT CONTROL



OIL & GAS/CHEMICAL



POWER GENERATION/DISTRIBUTION



PROCESS/MANUFACTURING



TRANSPORTATION & INFRASTRUCTURE



WATER/WASTEWATER

## Services We Offer

- On-Site and Factory Classroom Training
- Applications Engineering
- Software Asset Management
- Control System Modernization & Audits
- Extended Warranty
- Extensive Evaluation Unit Demo Inventory
- Proof of Concept Systems
- Software Maintenance Contract Management
- Integrator & OEM Software Toolkits

## Engineering Services Include

- Control Network Support
- DCS and PLC Programming
- Engineering CAD Drawings
- Prototype Development
- Network Support
- HMI/SCADA Programming
- System Tuning and Updates
- VFD Start-Up
- Customized Training



# Our Automation Vendor Partners



**Industrial  
Automation & Control**  
Premier Distributor

Automation Solutions Built For Industry 4.0 And Beyond. From creating the first remote I/O with Genius to our modern-day outcome-optimizing controllers that revolutionized the PLC, Emerson continues to surpass conventional standards to help customers maximize the power of the Industrial Internet. Emerson's next-generation industrial automation and control solutions optimize industrial processes safely, securely and reliably to give you peace of mind while realizing higher performance of operations in any environment.

	Total power quality solutions keep production lines moving while keeping people, equipment and information safe.		CIMPLICITY HMI/SCADA provides true client-server visualization and control—from single machines to plant locations spanning the world.
	Industrial networking, secure remote access, cellular RTUs, IIOT gateways and routers, protocol and media conversion, HMI and edge controls.		Industrial Ethernet and VPN Routers, Industrial Node Box and Panel PC's, Wireless Data and I/O, UPS Systems and Industrial Power Supplies/ Surge Protection.
	All-in-one controllers, consisting of programmable HMI, I/O, software, and peripherals for the industrial, process control, and building automation markets.		Rugged laptops and tablets for harsh industrial and hazardous locations. Wide range of computing technology from low power edge devices to high-performance plantwide servers.
	The first reporting software developed for industry to fully embrace the latest Microsoft Office technology. More than just reports, it provides a scheduler, a data logger, manual data entry and powerful analytics.		Makers of Dream Report - the world's most capable, on-premise and web-enabled data integration and report generator, specifically designed for industrial automation.
	Provides connectivity solutions that link dissimilar automation products. Products include PLC Remote Access, Communication Gateways and Industrial Wireless connectivity.		Honeywell Process Solutions (HPS) - Distributed Control Systems (DCS), Modular Process Controller, Remote Terminal Units (RTU), Wireless I/O and Sensor Transmitters.
	The recognized industry standard for alarm notification and management.		Industrial connectivity solutions to help businesses connect diverse automation devices and software applications.

# Industry Solutions

## Machine/Equipment Control

- Assembly
- Inspection Machinery
- Packaging Equipment Control
- Labelling
- Plant Floor Dashboarding
- Inspection
- Predictive Maintenance



## Oil & Gas/Chemical

- Wireless Tank Monitoring
- Distributed Control Systems (DCS)
- Harsh/Hazardous Area Systems
- SIL Safety Systems
- Vibration Monitoring
- Emissions Compliance & Reporting



## Power Generation/Distribution

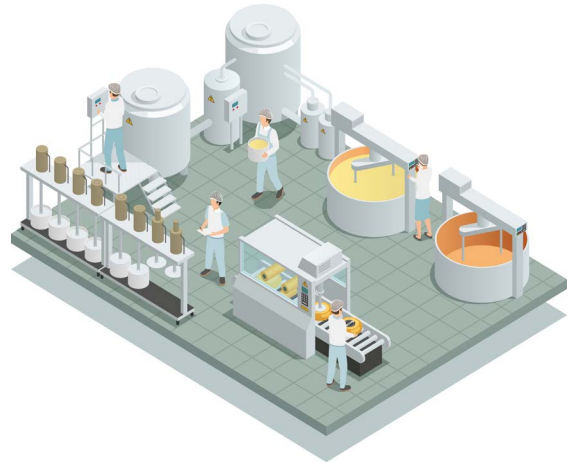
- Advanced Alarm Annunciation
- DNP3/IEC 61850 Integration
- Pothead Pressure Monitoring
- Balance of Plant Controls
- Safety Shutdown



# Industry Solutions

## Process/Manufacturing

- Heat Treating
- Temperature Control
- Batch Management
- Process Visualization
- Historian & Analytics
- Regulatory Compliance



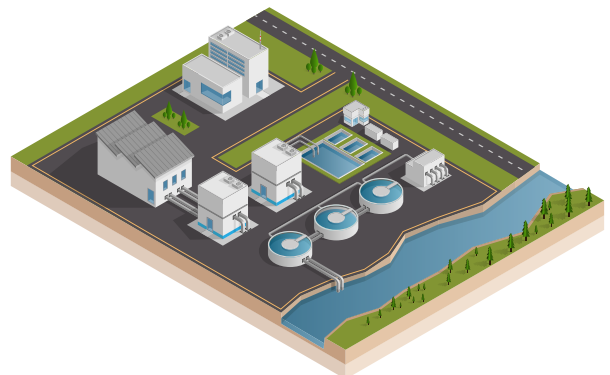
## Transportation & Infrastructure

- Tunnel Ventilation
- Airport & Bridge Lighting Control
- Sequence of Events Recording
- Critical Power Monitoring
- High Availability Power
- Building Automation



## Water/Wastewater

- Redundant Controller Architecture
- Remote Terminal Unit (RTU)
- Cellular Connectivity
- Plant wide HMI/SCADA
- Protocol Conversion & Networking Infrastructure
- Emissions Compliance & Reporting



# PLC/PAC/Process Controllers

## Programmable Logic and PAC Controllers

**Emerson PACSystems RX3i Rack Based Controller:** provides the foundation for Industrial Internet connectivity. It is a powerful, modular Programmable Automation Controller with a focus on high availability. The RX3i features a single control engine and a universal programming environment to provide application portability across multiple hardware platforms.

- Industry leading high-performance redundancy available
- Hot Swap I/O with Advanced Functions/Modules
- Optional EnergyPAC eliminates the need for batteries
- Wide Range of Standard and Special Purpose I/O
- Direct PROFINET I/O Support right out of the CPU
- Supports OPC UA data transfer standards



**Emerson PACSystems RX3i Rackless CPE 100/115:** Small Footprint. Big Impact. Leverage the power and flexibility of PACSystems in smaller applications. RSTi-EP CPUs make it possible to incorporate the entire PACSystems programming suite in stand-alone applications or as auxiliary control in larger process applications that use RX3i.

- Dual LAN interfaces with four Ethernet ports
- PROFINET I/O Control Built-In
- Available DNP3 Outstation capability
- Up to 1.5 MB of non-volatile user memory
- Only 1.5" of DIN rail space needed



**Emerson VersaMax Modular PLC's:** VersaMax Modular CPUs supply a number of features usually found only in PLCs with larger footprints, including up to 128kB of memory for application programs, floating point math, real-time clock, subroutines, PID control, flash memory, and bumpless program store. The serial ports support serial read/write and Modbus master/slave communications.

- Can be mounted horizontally or vertically to maximize enclosure space
- Wide variety of I/O Modules with up to 32 points per module
- Hot swappable I/O Modules
- Cost-effective I/O



**Emerson VersaMax Micro PLC:** The small-footprint VersaMax Micro PLC offers the flexibility of modular design and a variety of built-in features, including up to 64 I/O points [expandable to 170 I/O points], fast cycle times, a robust instruction set and extensive memory that multiplies your programming options.

- Removable Terminal Strips
- PID, PWM and High Speed Counter Support
- Base units range from 14-64 I/O
- Accommodates up to 4 expansion modules





# PLC/PAC/Process Controllers

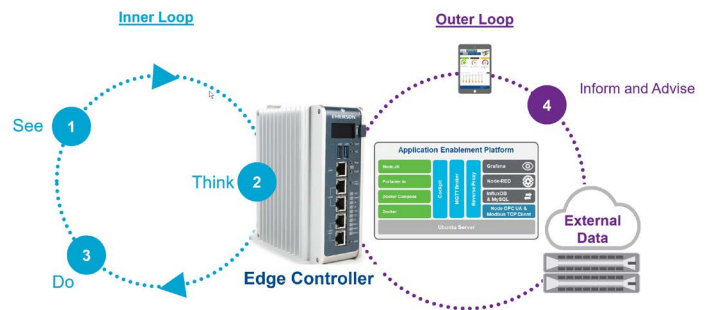
**Emerson PACSystems RX3i Rackless CPE400:** part of Emerson's Industrial Internet Control System, is a hypervised, multicore, outcome-optimizing controller. It is now possible to combine real-time deterministic control with physics-based analytics to securely connect to, easily collect, and analyze industrial data directly at the machine.

- Redundancy Built-In
- PROFINET I/O Control Built In
- DNP3 Communications
- Open Linux programming with the CPL410 model
- Optional EnergyPAC eliminates the need for batteries
- Supports OPC UA data transfer standards



**Emerson PACEdge™ 2.0 Platform:** PACEdge, with the unique PACSystems RX3i CPL410 controller, makes reaching and controlling the edge of your operations a straightforward, easily implemented process. PACEdge lets you begin where you are and scale as far as your operations and data demand. PACEdge provides for intuitive application development using proven applications like Node-Red for data processing, Grafana for visualization, and many more.. No more command line configuration - PACEdge has web interfaces for device administration, application development and scalability.

- Advanced Analytics
- Several Visualization Options
- Secure Networking
- Cloud Connectivity



## Process Controllers

## Honeywell

**Honeywell ControlEdge HC900 Process and Safety System:** an ideal control solution for user needs ranging from thermal control in boilers, furnaces, kilns, and dryers to unit processing in pharmaceutical, chemical, bio-fuel, pilot-plant and other applications. The ControlEdge HC900 can be used in applications requiring SIL2 such as emergency shutdown (ESD), critical controls, burner management systems (BMS), pipeline monitoring, tunnel ventilation systems and other critical applications.

- SIL2 Safety Controller
- High Performance multi-loop controller
- Menu driven functions and variable mapping make it easy to configure and program, with minimal programming skills required
- Purpose built HMI with quick and easy integration
- Full Redundancy available and easy to implement
- Powerful, purpose built, function block library. Designed to save time and frustration with stubborn control loops



# Industrial I/O

## Distributed

**Emerson RSTi-EP:** The RSTi-EP remote I/O system is well suited for Industrial Internet enabled applications. It features an extended operating temperature range, enhanced diagnostics, plug-and-play connectivity and high channel density – all designed to simplify machine design and maintenance.

- PROFINET RT, Profibus/Ethernet IP/Modbus TCP-IP, EtherCAT Interfaces
- Hot swappable with advanced diagnostics
- Supports PROFINET System Redundancy
- Best in class I/O density – Up to 64 I/O modules per node. Takes up half the space of traditional systems
- High Density Analog and Digital Modules
- Special function modules including High speed counter, Frequency, SSI Encoder, PWM Output, Serial Communications
- SIL 3 Compliant Safety Module



**Emerson RX3i PROFINET Scanner:** connect a remote universal RX3i I/O rack of Series 90-30 or RX3i modules to a PROFINET I/O Controller.

- Direct Fiber Interface to the remote I/O Rack
- Up to 16 Slot racks can be a single node
- Advanced Sequence of Events recording version available with IRIG-B time synchronization



**Emerson RX3i CEP Single-Slot RX3i I/O Carrier:** The RX3i CEP Carrier, a single-slot RX3i carrier with integrated PROFINET network interface and redundant 24 VDC power supply inputs, is the latest one-slot (expandable to two) expansion module from Emerson. It offers use of existing, advanced RX3i or Series 90-30 I/O in a small footprint, with superior availability for maximum uptime and flexibility to reduce operating costs.



**Emerson VersaMax Remote I/O:** The wide variety of modules available in the VersaMax PLC are also available for many demanding remote I/O applications.

- PROFINET Scanner I/O support with direct copper or multi-mode fiber interface, redundant power supplies, hot swappable I/O
- PROFINET, Ethernet Global Data [EGD] and Genius I/O Interfaces
- System Redundancy Support





# Industrial I/O

## Harsh Environment

**Emerson RSTi-OM:** Edge connectivity and a user-friendly configuration makes RSTi-OM I/O the easiest connection to the intelligent sensors and devices that your operations rely on. RSTi-OM modules are IP67 so they are protected from water, dust, and other extreme conditions. This rugged design allows you to place advanced I/O where you need it, without the use of a control cabinet.



Modbus

MQTT

OPC UA

IO-Link



## Wireless

**Honeywell Smartline & OneWireless:** The Honeywell OneWireless™ Network is the most powerful and the only industrial wireless network on the market with capabilities for supporting ISA100 Wireless [IEC 62734], WirelessHART [IEC 62591] and Wi-Fi devices on one end-to-end redundant, scalable and cyber secure network. Honeywell wireless technology allows seamless extension of the process control network into the field.

- Most secure with 3 factor identification
- Most reliable with built in signal routing, dual signal, automatic dropout recovery, mesh network, and redundancy also available.
- Lowest power loss, leading to longest battery life on the market
- Easily integrated into existing systems with HART, Modbus, OPCUA, and CDA support.
- Uses Smartline Wireless or XYR6000 transmitters. Smartline transmitters use same process head as wired transmitters, reducing spare parts
- Explosion proof

WirelessHART



Honeywell



**Phoenix Contact Radioline Wireless System:** The wireless system for extended systems. Special features include extremely easy assignment of inputs and outputs by simply turning the thumbwheel, without any programming. Thanks to Trusted Wireless 2.0 technology, Radioline is the ideal choice for reliable use in industrial environments.

PHOENIX CONTACT



Modbus



## Ruggedized

**Red Lion E3 I/O:** Available in DIN-rail and panel-mount form factors, Red Lion's E3 I/O modules feature rugged metal enclosures to support wide environmental tolerances and enable seamless integration into any industrial environment. Wide -40° to 75°C operating temperature, high shock and vibration ratings coupled with industry certifications that include UL Class I, Division 2 listing, ATEX\* and IECEx\* approvals make each E3 I/O module safe for use with industrial control equipment in hazardous locations.

RED LION  
a spectris company



Modbus



# Industrial Computing & Displays

## Industrial/Panel Mount PCs & Monitors

**Emerson RXi2 EP/XP/UP Industrial PCs:** The RXi2-EP IPC delivers compact, rugged, high level performance computing capabilities to run HMI, historian, and analytics applications right at the machine, enabling improved real-time control of operations and better integration into plant-wide systems.

- Rugged Fangless Design with up to 4 PCI Express Slots
- Up to 512 GB SSD, 32 GB RAM
- 5 GB Ethernet Ports
- Quad Core i7 and Xeon Processors available
- RAID Configurations available



**Emerson RXi Panel PC/Industrial Monitors and Web HMI Panels:** The RXi portfolio ranges from 7" to 24" screens with select models available with outdoor sunlight readability. The modular nature of the unit offers a substantial amount of flexibility. For instance, you can easily swap an indoor screen for an outdoor screen, change screen sizes, or simply replace a damaged screen while utilizing the same computing unit. For Panel PC applications, multiple compute modules are available allowing upgrades without making screen hardware changes.

- Durable projected capacitive screen technology
- Multi-touch (10 point) screen control
- Sunlight readable option
- Multi-display daisy chaining via Display Port



**Emerson RXi2 - BP Industrial PC:** The RXi2-BP IPC delivers high compute performance in a rugged and compact enclosure, well suited to run HMI, historian, and analytics applications right at the machine to enable improved real-time control of operations and better integration into plant-wide systems.

- AMD Ryzen Embedded V1000 and R1000 Series CPUs
- Fanless operation in a rugged and extended temperature environment
- DIN rail or bookshelf mounting



**Emerson RXi2-LP Industrial PC:** RXi2-LP (LowProfile) fills a niche with new processors, fast SSD storage, strong graphics, and enhanced security features in a compact form factor.

- 2nd Generation AMD G-Series CPUs
- Up to 4 Gigabit Ethernet ports



# Industrial Computing & Displays

## Fault Tolerant/High Availability

**Stratus Technologies ft Server:** Taking the complexity out of keeping business critical applications running 24/7. Technology that proactively prevents instances of unplanned downtime coupled with services to ensure any issues are addressed before you need to.

- No unplanned downtime
- No data corruption or loss even with component failures



## Ruggedized Laptops

**Dell Latitude 7424 Rugged Extreme Laptop:** The Latitude Rugged family has been trained and tested for some of the world's toughest jobs and most hazardous environments. Built smart and durable to ensure you never have to slow down.

- Multi-touch, sunlight readable 1000 nit brightness
- Glove touch and passive pen enabled
- 6 foot drop tested & IP65 ingress protection
- Can be bundled with Emerson PAC Machine Edition programming software



## Safety Rated

**Dell Latitude 7220EX Rugged Extreme Tablet:** Intrinsically safe for maximum productivity. Stay focused even in potentially explosive environments with the ATEX, IECEx certified\* Latitude 7220EX Rugged Extreme Tablet, featuring a 1000-nit sunlight-viewable anti-glare screen and glove-touch capability.

- 4G/LTE mobile broadband built-in



## IoT Edge Gateways

**Dell IoT Edge Gateway 3000/5000:** Edge Gateway, with powerful dual-core Intel® Atom™ processors, connects varied wired and wireless devices and systems, aggregates and analyzes the input, and sends it on. Because the Gateway sits close to your devices and sensors, it sends only meaningful data to the cloud or control center, saving you expensive bandwidth.

- Ubuntu Core and Windows 10 IoT Enterprise OS available
- GPS/Wi-Fi/Broadband/Bluetooth/ZigBee/CANBus connectivity





# Operator Interface & Visualization

## Operator Interface & HMI

**Emerson QuickPanel+ Operator Interface:** QuickPanel+ integrates process control, view, and an option to run embedded data historian to improve real-time control and simplify integration into plant-wide systems. The QuickPanel+ takes machine interfaces into the Industrial Internet age for new levels of productivity, insight, and user experience.

- Highly responsive, capacitive and multi-touch functionality
- Control capability with Emerson and third party I/O
- Fully integrated view, control and data historian collector
- Fully-functional browser and multimedia capability including sound and video playback
- User defined email and text alerts
- Custom, web reports and graphs
- Powerful scripting options



**Red Lion CR1000/CR3000 Series HMI's:** The new CR1000 and CR3000 HMIs are available in a broad range of sizes, from 4.3 inches up to 15 inches and feature a wide array of connectivity options to address the real-world challenges of today's multi-vendor manufacturing environments.

- More than 300 industrial protocols available with Crimson 3.1
- Updated and expanded symbol libraries and primitives with anti-aliased rendering, as well as the ability to support 16M colors
- Protocol translation and serial communications
- OPC UA, SQL, DNP3, and connectivity to major cloud providers



## Large Displays

**Red Lion ProductVity Station:** Collect and display KPIs on any TV in just minutes! Red Lion's ProductVity Station lets you create your own sophisticated production scoreboard using standard, consumer-grade LCD, LED or plasma TVs.

- Built-in communications drivers and protocol conversion let you interface to most PLCs, drives, motion controllers and other automation equipment
- Works with any brand or size of modern TV, monitor, or projector
- Internet-ready with built-in Web and FTP servers for remote access and control
- Expansion modules available for additional connectivity options or local I/O



## All-In-One HMI/Controllers

**Horner XL7:** The XL7 was designed around a high-resolution, wide aspect ratio color touchscreen with 1000 nits of LED backlighting. The display benefits end-users by providing high outdoor visibility and allowing the XL7 to be used in a variety of ambient lighting conditions. In addition to exceptional display performance, the XL7 contains a powerful logic engine with built-in digital and analog I/O and online programming capability.

- Built-in digital & analog I/O with two 500kHz high-speed counters
- Two CAN ports for fieldbus flexibility
- USB 2.0 ports for programming & FLASH drive support
- microSD slot, up to 32GB, for virtually unlimited data logging



# Communications

## Protocol/Media/Serial/Ethernet Conversion

**Red Lion Data Station:** The Data Station Plus (DSP) and DA Series Data Stations are designed to act as a nexus for industrial data collection and management. The unit offers multiple protocol conversion, data logging and remote machine access. With three built-in serial ports and a 10/100Base-T(X) Ethernet port, the unit provides serial conversion (serial to/from Ethernet) and protocol conversion to enable seamless communication between disparate devices. The Ethernet port supports up to four protocols simultaneously so even Ethernet to Ethernet protocols can be converted. Built-in communications drivers and protocol conversion let you interface to most PLCs, drives, motion controllers and other automation equipment.

- Easy drag and drop configuration using Crimson
- Over 300 Protocols Supported
- DA Series adds data acquisition and Embedded OPC UA Server
- DSP series support additional plug-in communication options include CANopen, Devicenet and Profibus, as well as additional Ethernet/Serial Ports.
- High performance DSP model converts up to 15 protocols, simultaneously



**Red Lion Ethernet & Serial Media Converters:** Not only extend communication links, but also bridge connectivity between disparate types of media, connectors or speeds. Providing fast performance and rugged operating specifications, DIN-rail mountable media converters include copper and fiber – up to Gigabit speeds



## Specialty Communications

**ProSoft Ethernet and Serial Gateways:** ProSoft Technology's stand-alone, DIN-rail mounted industrial gateways provide a means to read or write data from devices on dissimilar protocols. All gateways come with our ProSoft Discovery Service feature.



**Emerson PACSystems\* RX3i Communication Modules:** For mission-critical power and water infrastructure systems and industrial projects where redundancy is a key requirement, Emerson has augmented its Ethernet-enabled control systems by developing 3 new modules embedded with IEC61850, DNP3 and IEC60870-5-104 standard Ethernet communication protocols, which can be rack-mounted into its PACSystems RX3i controller. With these “in-rack” the RX3i can connect down to the IED level and up to the SCADA level without an external gateway device.



# Networking & Communications

## Unmanaged, Monitored & Managed Ethernet Switches

**Red Lion N-Tron® Series Unmanaged Ethernet Switches:** Industrial unmanaged Ethernet switches offer powerful network performance with plug-and-play functionality. With an endless range of port options, these unmanaged switches are set to tackle the demands of industrial data acquisition, control and Ethernet I/O applications.



**Red Lion N-Tron® Series Monitored Ethernet Switches:** Monitored industrial Ethernet switches provide network performance monitoring with N-View technology. These rugged, compact switches are built for mission-critical applications and provide cost-effective network monitoring options that can be integrated directly into any industrial control system.

**Red Lion N-Tron® Series Managed Ethernet Switches:** Rugged, reliable managed industrial Ethernet switches support industry-standard applications. These hardened switches are ideally suited for harsh industrial environments where real-time performance under extreme operating conditions is required. Built-in redundancy and network management ensure communications stay up and running while providing tools for monitoring and tracking.



## PROFINET Enabled Managed Switches

**Red Lion NT4008 Gigabit Managed Ethernet Switches:** Red Lion's NT4008 8-port Gigabit Managed Industrial Ethernet switches are certified to meet PROFINET PNIO v2.34 conformance class B [CC-B], RT Class 1 standards to ensure seamless integration into PROFINET networks using standard PLC configuration and management tools.

- Wide -40° to 80°C operating temperature range
- Dual 12-58 VDC Power Inputs
- Choice of either 8 Gigabit Copper or 6 Gigabit Copper/2 dual mode SFP slots
- MRM or MRC Media Redundancy models available



**Emerson PACSystems PROFINET I/O Gigabit Ethernet Switches:** With the high-performance capability of 10G ports, this latest series of PROFINET managed switches easily prioritize, partition and organize user's network and provide reliable and good quality services. It is ideal for factory automation applications.

- Supports PROFINET System Redundancy
- Provides Gigabit Copper plus SFP (small form pluggable) ports 100FX or 1000BaseF [SX/LX/LH]





# Networking & Communications

## Cellular RTU & Networking Gateways

**Red Lion FlexEdge™ Intelligent Edge Automation Platform:** FlexEdge is a highly scalable IIoT platform that embodies communication technology at its core and layers on powerful automation features like industry-leading protocol conversion, multichannel alerts, visualization, data logging, IIoT cloud connectivity, and advanced networking features.

- The DA50 is an advanced protocol converter with modular communication and data logging
- The DA70 adds Edge controller capability and integrated, scalable I/O.
- Over 300 protocols available
- Communication sled architecture enables customized connectivity including Serial, Cellular, USB and Wi-Fi Client



DA50

DA70

**FLEXEDGE™**



Communication Sled Options



## Secure Remote Access

**Red Lion RA Series Remote Access Routers:** The Red Lion RA platform delivers next-generation remote access solutions to meet the most intense, high-security demands of modern industrial applications. Red Lion's Secure Remote Access routers and software centralize equipment management, allowing you to quickly respond to and act on your most crucial data from anywhere.

- Keyed RA70K model enables local staff to enable or disable remote access to systems.
- Ethernet, serial and cellular models available
- Built-in I/O to trigger email or SMS texts



## POE (Power Over Ethernet)

**Red Lion Power over Ethernet Plus (PoE+) Managed and Unmanaged Switches:** Red Lion's N-Tron® PoE+ products enable plug-and-play operation for up to sixteen 10/100/1000Base-T(X) devices with PoE+ support on 8 ports.



# Power Quality

## Regulated DC Power

**SolaHD Performance and Core SDN Series:** These DIN rail power supplies offer extreme reliability and efficiency, easy troubleshooting and our most resilient design for use in harsh environments, extreme temperatures and hazardous locations.

- 5 Year Warranty Standard
- Wide -40°C to +70°C operating range
- Single and three phase Input models deliver up to 960 Watts
- Redundancy ready using RED module
- DC OK Relay Output
- ATEX and IECEx approved models available

**SOLAHD**



**SolaHD Essential SVL Series:** When your equipment is installed in a controlled environment, these power supplies convert AC to DC power in a compact footprint.

- 2 Year Warranty Standard
- Single Phase Input delivers Up to 480 Watts



## UPS (Uninterruptible Power Supply)

**SolaHD SDU AC-B Series DIN Rail UPS:** The SolaHD SDU AC - B Series DIN Rail UPS combines an industry leading compact design with a wide operation temperature range, enhanced communication and unique installation options. The SDU Series provides economical protection from damaging impulses and power interruptions. These units include easy to wire screw terminations for critical devices needing battery back up such as PLC/PAC control systems.

- Lightweight, compact industrial design
- Communications port for optional Industrial Ethernet protocols or discrete communication card
- User Replaceable Long-Life High-Temperature Battery



## Power Conversion and Protection

**SolaHD Complete Power Solutions:** Industrial environments depend on electronic equipment to succeed in today's highly competitive, efficiency-driven business world. Computers, drives, motion controllers and sensors have become essential for optimal productivity, consistency and quality. However, these sensitive components require clean, stable, quality electricity to perform properly. Power quality issues, such as voltage fluctuations, harmonic distortions, noise and power outages disrupt production, damage equipment and corrupt valuable data.



# Motion Control & Safety

## Variable Frequency Drives

**Emerson PACMotion® VFD:** An integrated, rugged, and modular variable frequency drive designed for a range of applications, including water/wastewater, metro, automotive, mining, food and beverage, packaging, oil and gas, discrete manufacturing and modular machine designs.

The PACMotion VFD easily and seamlessly integrates with PACSystems RX3i applications for quick and cost-effective installation. Incorporated within Emerson's Machine Edition, it offers plug-and-play startup and simplified programming. Customers can leverage native PROFINET System Redundancy support, eliminating the need for an intermediary device and saving up to 15% in control solution costs.



## Servo Motion Control

**Emerson PACMotion® Servo:** PACMotion is tightly integrated with Emerson PACSystems RX3i and PAC Machine Edition engineering tools. With motion, HMI, PLC, and machine logic events integrated into the same view, PACMotion streamlines synchronization for simple setup, maintenance, and troubleshooting. Standard motion blocks make it easy to assemble applications and operators can even dynamically change motion profiles. This gives you the ability to manage smaller lot sizes and rapid changeovers for increased machine utilization.

- Up to 40 axis of control in a single system
- Multiple encoder options
- Functional replacements for legacy FANUC motors utilized in PLC based motion applications.



EtherCAT®

## Machine Safety

**Emerson PACSafe Configurable Safety Controllers:** The PACSafe Configurable Safety Controllers easily scales from small to complex machines and provides an intuitive graphical-based interface for configuration and programming, easy integration to Emerson's PACSystems and VersaMax controllers over Industrial Ethernet, and fast safe state reaction times. These qualities result in reduced development and commissioning times and smaller overall machine sizes – leading to higher productivity and profitability.

- Flexible and intuitive icon-based programming with drag-and-drop configuration
- Pre-configured safety function blocks to simplify application programming





# HMI/SCADA & Historian

## HMI/SCADA

**Emerson Movicon.NExT™:** The flexible Movicon.NExT™ software platform allows you to operate in one all-inclusive, easy-to-use development environment. The scalable architecture can be used to design any project, from small HMIs to more expansive control rooms, providing exceptional cost efficiency and time-saving advantages, along with expanded configuration and deployment possibilities. The platform's intuitive configuration environment helps streamline complex project designs, seamlessly integrating native functional modules with third-party solutions for expanded performance capabilities. Core platform features, including configuration, communication, visualization, data recording, analysis, security and control, help deliver superior integration, scalability and interoperability advantages.



**GE Digital CIMPLICITY HMI/SCADA:** CIMPLICITY provides true client-server visualization and control—from single machines to plant locations spanning the world—helping you manage your operations and improve decision making. Based on decades of GE's research and development, CIMPLICITY is the HMI and SCADA of choice for the world's largest organizations. For applications of all sizes, CIMPLICITY can help deliver faster responses, reduce costs, and increase profitability.



- Easily scales from small systems up to 500,000+ tags
- High availability options include: Host redundancy, Windows cluster support, dynamic configuration, support for high availability hardware
- Unique DGR [Digital Graphic Replay] option enabling incident playback for process analysis and training



## Historian

**GE Digital Proficy Historian:** Proficy Historian is a best-in-class historian software solution that collects industrial time-series and A&E data at very high speed, stores it efficiently and securely, distributes it, and allows for fast retrieval and analysis—driving greater business value. With decades of experience and thousands of successful customer installations around the world, Proficy Historian changes the way companies perform and compete by making data available for asset and process performance analysis.

- One click integration to CIMPLICITY
- Store & forward prevents critical gaps in data
- Native and MQTT data collectors
- Scales from small to millions of tags
- AWS, Google, and Azure cloud connectivity



# Reporting & Alarming

## Reporting

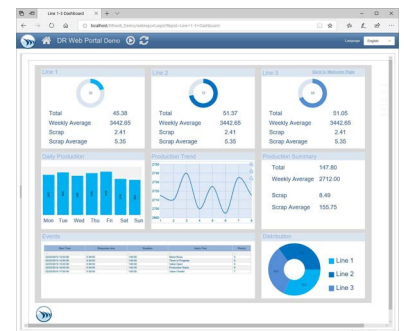
**SyTech XLReporter:** The leading reporting software for industry. It provides automated and on-demand reports for compliance, regulatory, production, efficiency, batch, performance, productivity, quality, alarm analysis and maintenance. The software is for anyone who wants to use their existing knowledge of Microsoft Excel to produce results in minutes, not days. It is priced for any budget, seamlessly integrated into any existing system and requires no executive decisions or additional hardware.

- Connect to over 70 data sources
- Industry analytics and calculations
- Publish to PDF, workbook and web
- Distribute to Email, FTP and more
- No limits on tags, templates or reports



**Ocean Data Systems Dream Report™:** Taming that ocean of data with industrial reports and dashboards for every market. It's the first programming-free, user-friendly, automated reporting and data analysis software designed specifically for industrial automation applications. It is designed to be the simplest solution for extracting data from virtually any data source. Dream Report provides automated reports to anybody, anywhere and anytime.

Built on today's modern technologies, Dream Report fits perfectly for all types of reporting, from compliance to performance, efficiency, and maintenance reporting in discrete, hybrid and process automation markets. Dream Report makes information gathering and formatting so simple that you'll be generating the reports you want.



## Alarm Management

**WIN-911 Alarm Notification Platform:** WIN-911 is the world's leading software platform for securely interacting with industrial equipment alarms. You can receive and send notifications in real-time via mobile app, text message, email, voice or in-plant announcement, reducing downtime and operational costs.

WIN-911's secure software notification platform allows your team to remotely interact with your plant's equipment alarms via mobile app, text, voice, email, or in-plant announcements, which means problems get fixed faster, waste is reduced, and maintenance and staff costs go down.

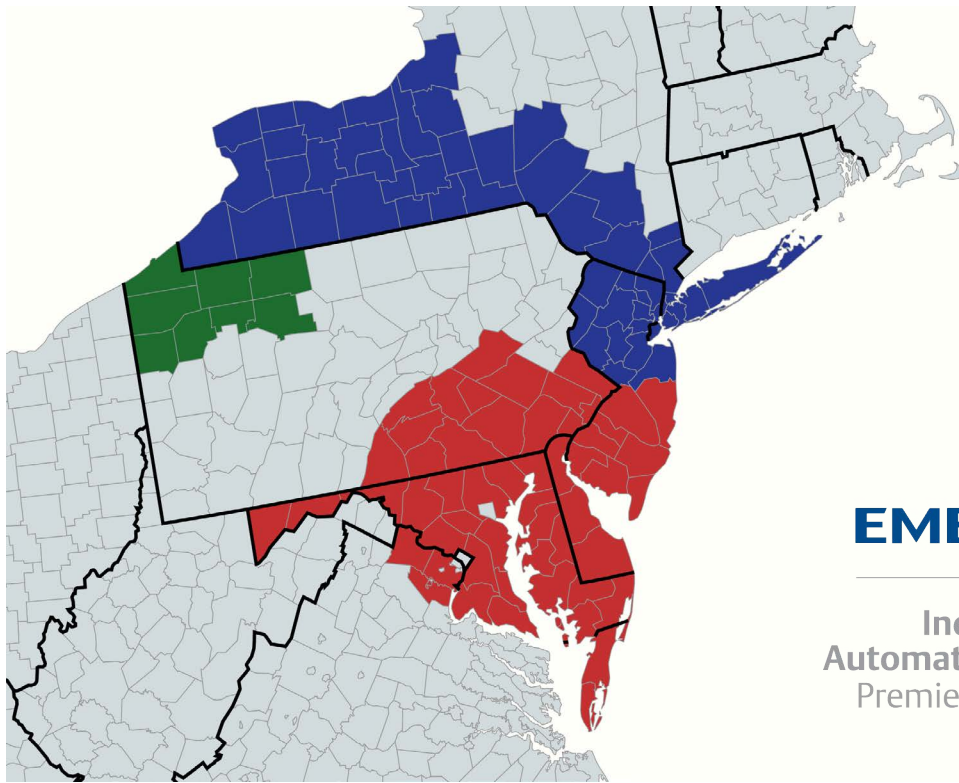


# Contact one of our specialists today

Rawson/Industrial Controls  
160 McClaren Road  
Coraopolis, PA 15108  
(412) 220-2202

Rawson/Industrial Controls  
232 N Governor Printz Blvd.  
Lester, PA 19029  
(610) 521-7400

Rawson/Industrial Controls  
17 Christopher Way  
Eatontown, NJ 07724  
(732) 918-9000



Industrial  
Automation & Control  
Premier Distributor

[www.rawsonicd.com](http://www.rawsonicd.com)

Analytical • Building Automation • Filtration • Industrial Automation  
Instrumentation • Steam/Energy Management & Technology • Valves & Actuation



**Rawson** | **Industrial Controls**  
an **ERIKS** company