

**OUR KNOW HOW.
YOUR PEACE OF MIND.**

Steam Solutions



Rawson
a relevant. company

Steam Solution Know-How

Our team of specialists have years of experience in planning and engineering. This knowledge combined with our valuable manufacturer partnerships, allows us to provide you with the **full steam system solution** by offering:

- A complete and quality product and component offering
- Steam surveys, steam management, in-field repairability and ongoing consultation of your steam systems
- The latest and most innovative state-of-the-art product technologies to:
 - Collect data about your steam and plant air systems
 - Identify inefficiencies
 - Offer suggestions to improve production capabilities

TLV Thermostatic Steam Traps

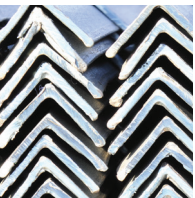


TLV Thermodynamic Steam Traps



TLV Steam and Condensate Manifolds with Integral Sealed Valves

TLV Mechanical Free Float® Steam Traps



Punched Stainless Steel Products

Ball, Gate, Globe & Check Valves



Pre-Insulated Tubing



Copper & Stainless Instrument Tubing

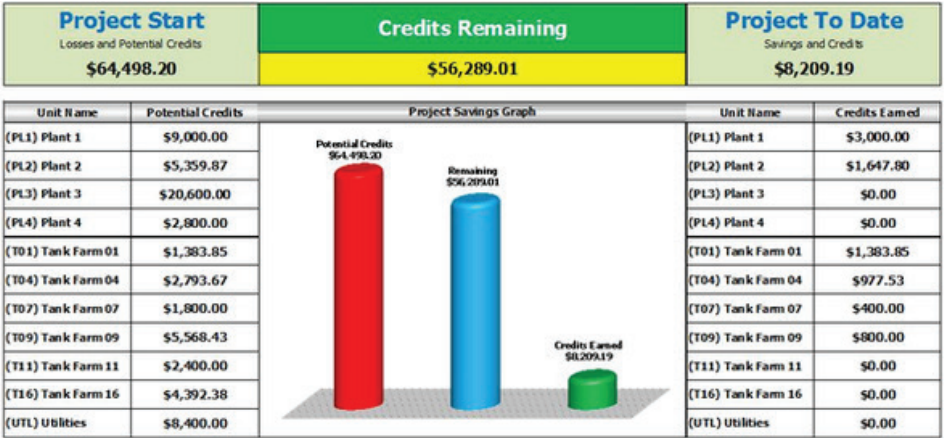
Our specialists and know-how are equipped to solve a variety of common and complex steam issues to help you determine areas of waste related to your energy production and utilization.

Surveys & Services

Rawson, a Relevant company, provides a detailed and comprehensive analysis of all steam, condensate and other areas needing service or replacement. Our Energy Management & Technology (EMT) steam solution offering yielded the following results for our customers:

Our steam trap surveys and testing provides:

1. Detailed TLV TrapMan® testing of every trap on site (steam trap databases management)
2. Engineering assistance
3. An accurate reading on how much steam you're losing through our factory-trained technicians that use state-of-the-art software
4. Recommendations through comprehensive reporting with suggestions for steam trap replacement, repairs or modifications
 - Steam Trap replacement suggestions are primarily based upon TLV's Steam Trap Application Review or "STAR" agreed upon by the site standard engineering specifications and included for each condensate discharge location regardless of test result
5. Post survey training and auditing
6. Ongoing maintenance response management



Instrument and equipment protection prevents accidents and maintenance disasters from occurring. We provide:

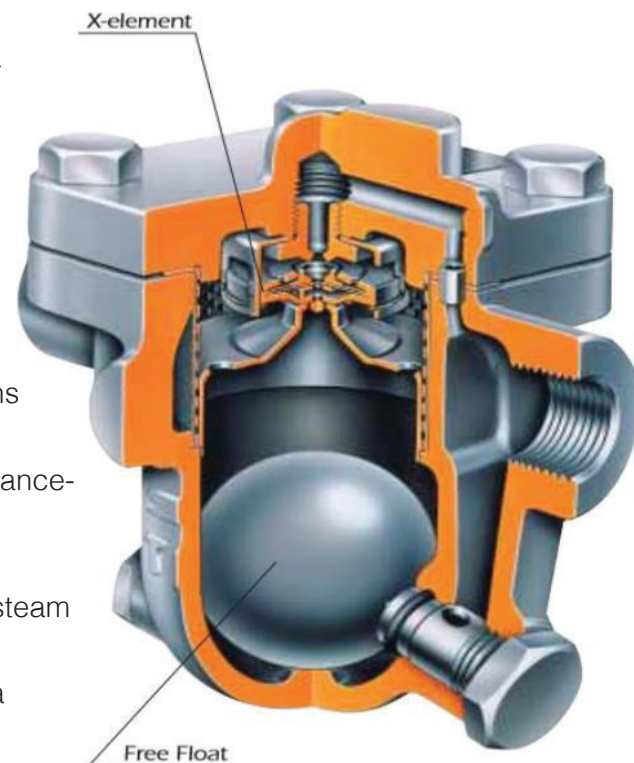
- Pre-insulated tubing
- Copper and stainless instrument tubing



Advanced Steam Trap Technology Offering

TLV's Patented Free-Float® Technology- provides a continuous flow which provides a variable orifice

- Reliable and durable cast iron, cast steel or stainlesssteel steam trap with tight shut-off for use on processequipment and distribution headers
- Self-modulating free float design provides continuous,smooth, low velocity condensate discharge as processloads vary
- Precision-ground float, constant water seal and three-point seating design ensure a steam-tight seal, evenunder no-load conditions
- Only one moving part, the free float, prevents concentratedwear and provides long maintenance-free service life
- Automatic air venting removes air and non-condensablesduring start up. Vent closes at steam temperature
- Built-in strainer screen with large surface area ensuresextended trouble-free operation
- Easy, inline access to internal parts simplifies cleaning andreduces maintenance costs



TLV's Steam and Condensate Manifolds with Integral Sealed Valves – M & MP Series

Utilize the rugged, compact and versatile design of TLV's all-in-one packages for steam distribution and condensate collection to simplify and rationalize the control of your steam system. The compact size reduces installation space and organizes different steam and condensate lines, steam traps and isolation valves into one manageable package.

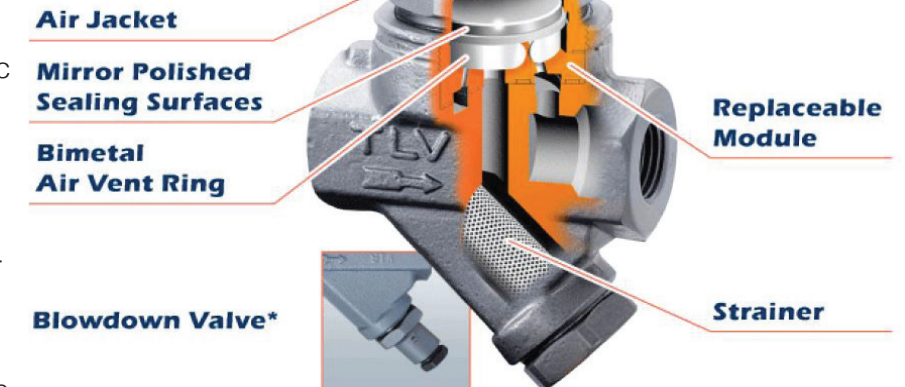
- Compact and versatile design minimizes installation area and easily adapts to plant requirements
- Choice of bellows sealed or piston sealed valves
- Durable, forged steel body means high endurance and long service life, which leads to minimized maintenance and replacement costs
- Stellite hardened surfaces on valve plugs and valve seats provide a reliable seal
- Built-in blowdown and drain connections
- Manifolds with various numbers of branches, including 4, 8, 12, 16 and 20 branch models available incorporating shutoff valves and steam traps
- Custom designs are available

“Our steam trap technology and quality products are the preference of some of the largest refineries and petrochemical plants in the world.”



TLV's PowerDyne® Disc Trap Redefines the Disc Trap Concept – reduces cycles to help reduce wear on the disc and leads to longer service life

- **Longer service life** - air-jacketing reduces no-load cycling and hardened valve trim to reduce wear and promote reliable operation
- **Energy conservation** - mirror polished, lapped disc provides steam-tight seal without air binding
- **Increased productivity** - quick thermostatic air venting with bimetal ring for fast start-up
- **Easy maintenance** – replacement module design enables quick inline steam trap repair reducing maintenance costs and built-in screen for extended trouble-free service



TLV's QuickTrap® Universal 2-bolt Connector and Steam Traps – provide convenient trap replacement for multiple pipe configurations

- Trap installation and replacement in minutes
- Inline replaceable trap with a 2-bolt universal connection offers high air venting capability for steam mains, tracers and coils.
- Two-bolt universal connection allows replacement of trap body with valve seat in minutes without disturbing piping reducing maintenance costs.
- Universal connector permits trap installation in the correct orientation with optimum positioning regardless of existing piping configuration.
- Screen located in the built-in wye-strainer help prevent rust, scale and debris from entering and clogging the trap.
- Debris is easily removed via the optional blowdown valve, further reducing maintenance costsassociated with cold or blocked trap replacement



Full line of Wye-Strainers – we also will weld the blow down valve (which we can also provide) to the wye-strainer to provide a full system solution

- Sizes – 1/2" thru 24"
- Class – 125# thru 2500#
- Material – Cast Steel, Cast Iron Stainless, or Alloy Steel
- Connection – Threaded, Flanged, Socket or Butt welded
- Provided with blow out valves if needed, threaded or welded.

Steam Desuperheaters & Critical Service Control Valves

- Steam pressure let-down
- Steam desuperheating

Steam System Solutions

Rawson, a Relevant Company, provides a a detailed and comprehensive analysis and evaluation of all steam, condensate and other areas needing service or replacement. Our Energy Management & Technology (EMT)steam solution offering has led to the following results for our customers:



DOCUMENTED
ENERGY **COST**
REDUCTIONS



LONGER
PRODUCT
LIFESPANS



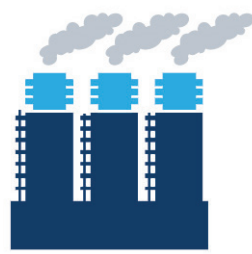
ENHANCED EFFICIENCY,
PRODUCTIVITY
AND **RELIABILITY**



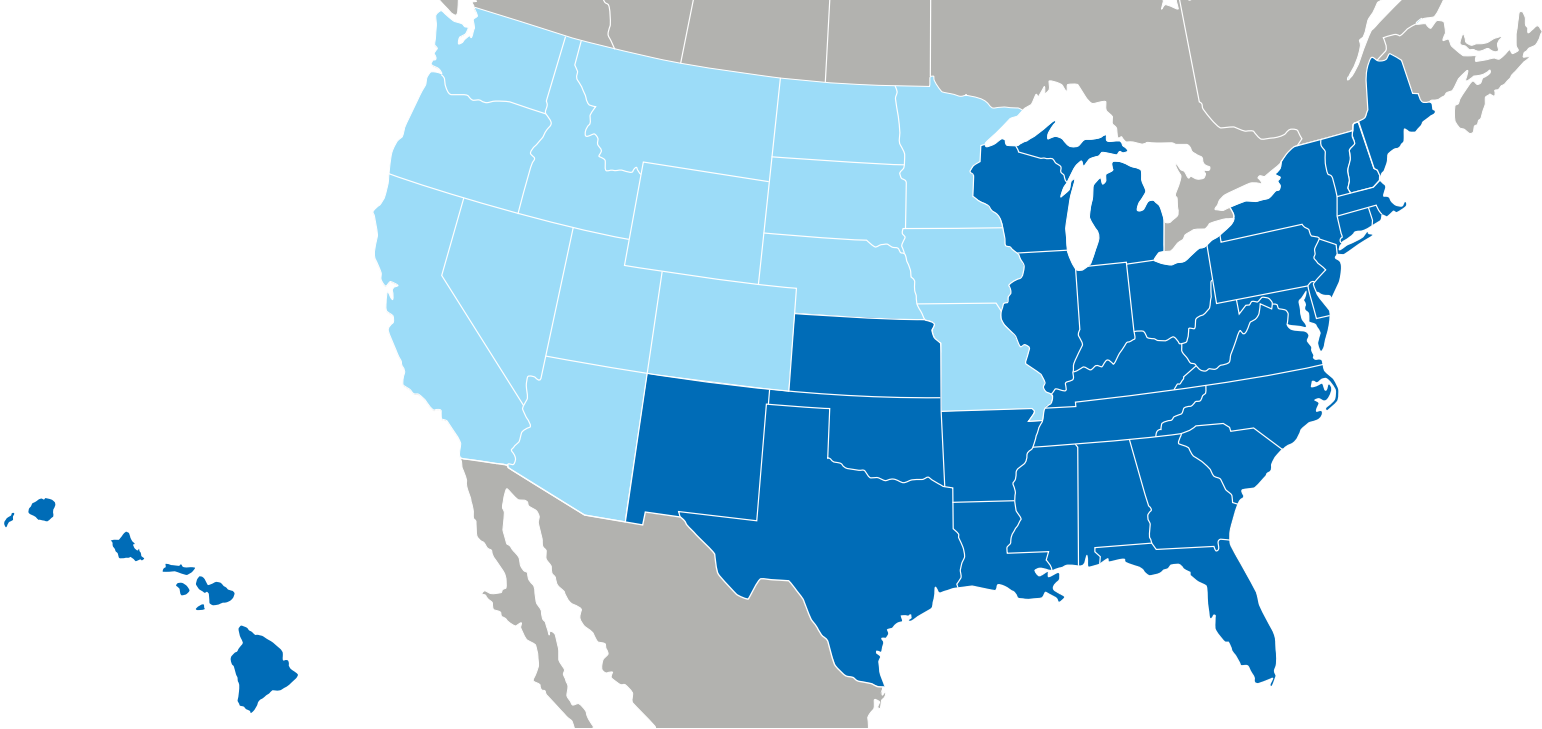
REDUCED DOWNTIME &
UNSCHEDULED
INTERRUPTIONS



UPGRADED
SAFETY



REDUCED
STEAM **LOSS**



■ Primary coverage
area for customer base
■ Secondary coverage area

**We offer complementary products
and services across multiple
industries.**

- Conveying Systems
- Engineered Plastics
- Filtration
- Gaskets
- HVAC Controls & Measurement
- Hydraulic Hose
- Industrial Hose
- Instrumentation
- Process Controls & Measurement
- Seals
- Valve Automation
- Valves

Innovative
solutions from
over **40** locations
across the United
States of America.



For more information, to request a quote or to
contact your nearest Service Center location visit:

www.rawsonicd.com